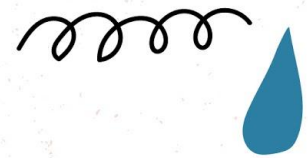
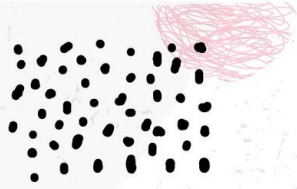
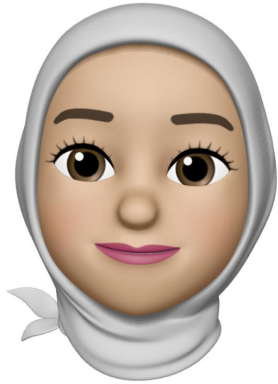


Nursing Homes Lives Matter

Boxed Senses 2

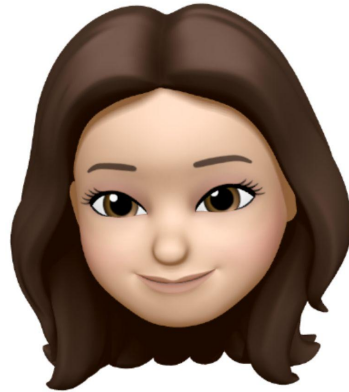


Our Team



Hajer

MBA 21



Angela

CM 22



Chinmay

CM 21



Emmanuel M

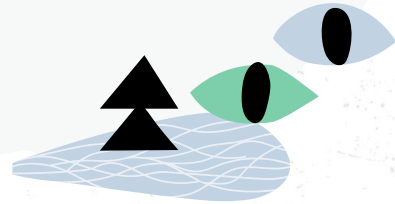
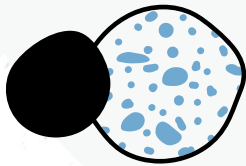
Coler Resident





OI

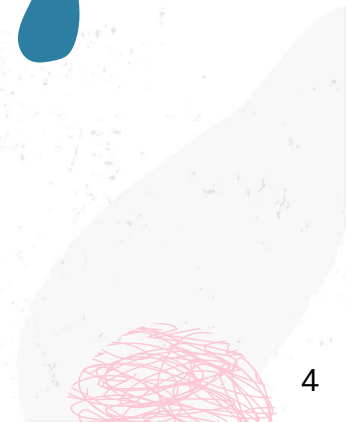
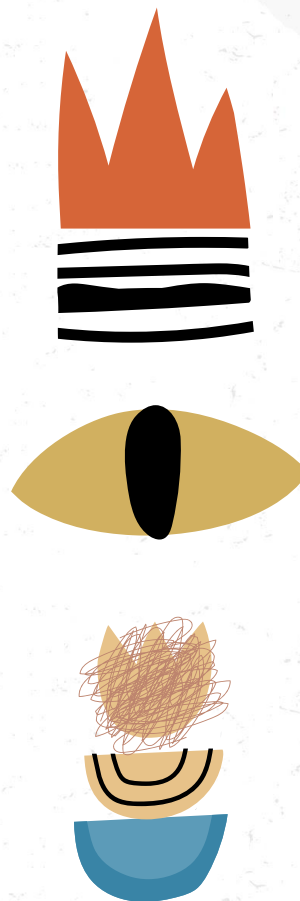
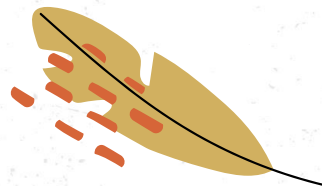
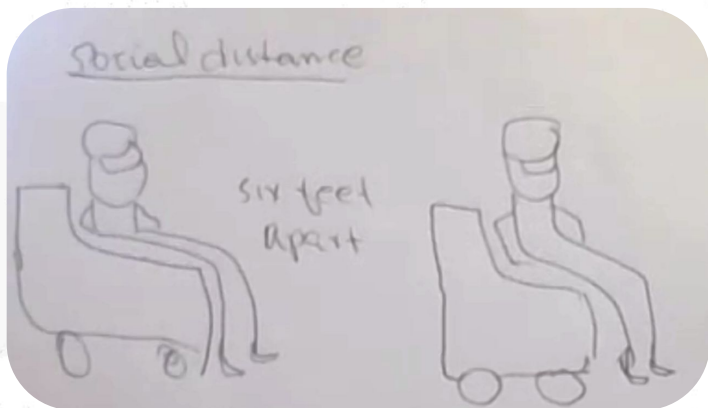
Introduction



About Project

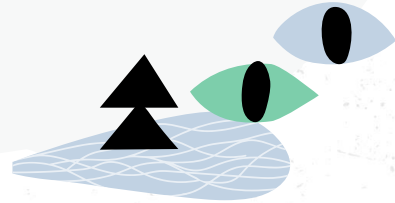
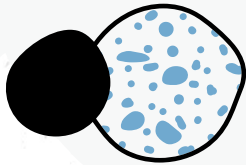
“How might we”

How might we enable Coler nursing home residents to make their voices heard by the staff and community for an impact using light to project words and images?

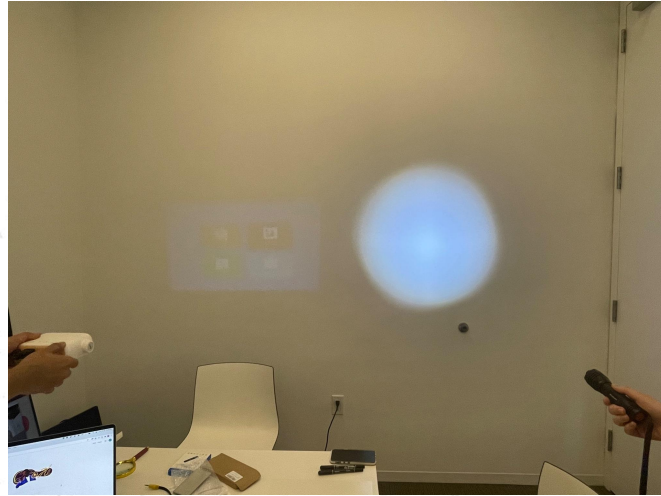


02

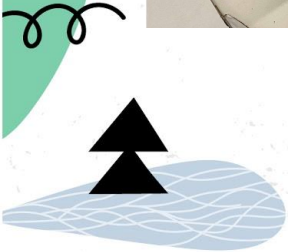
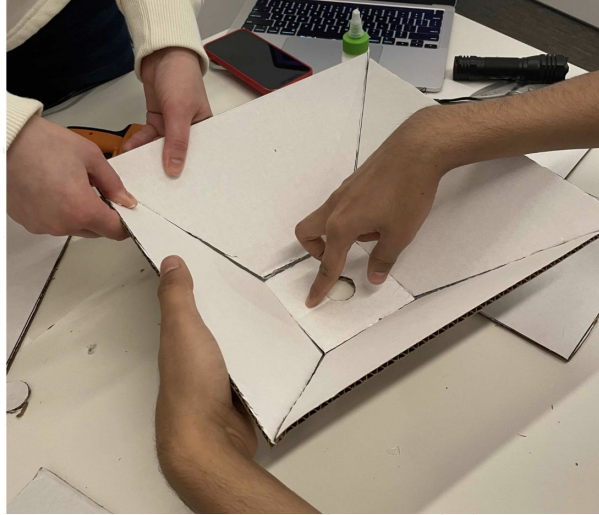
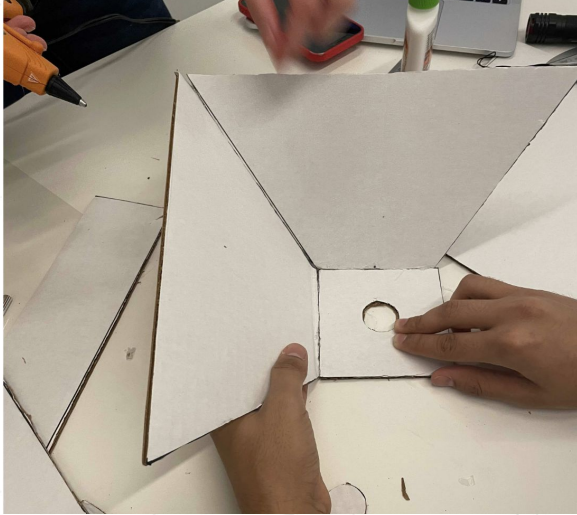
Recap



Recap of Prior Models



Recap of Prior Models (cont.)

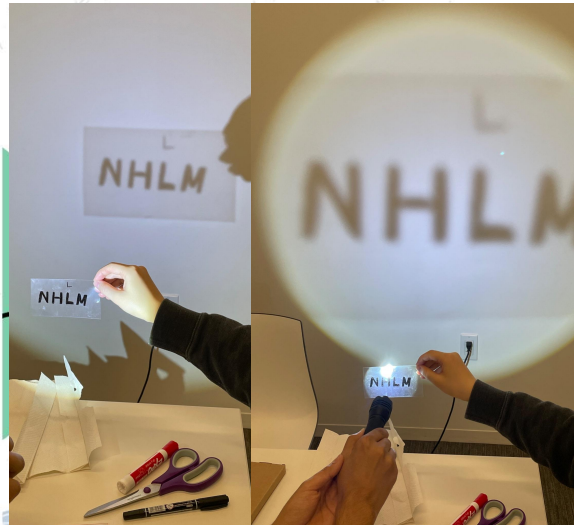


Exploring Ideas for Stencils



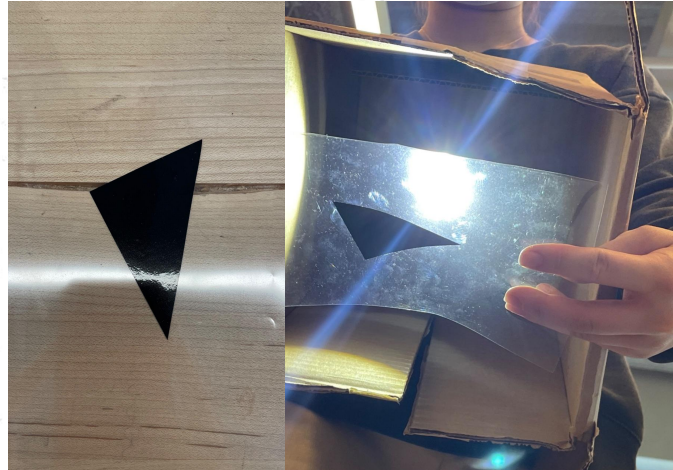
Acrylic Paper

Depended on flashlight brightness & distance but not too vivid



Vinyl (black)

The outcome was clear, but not too vivid.



Cardboard

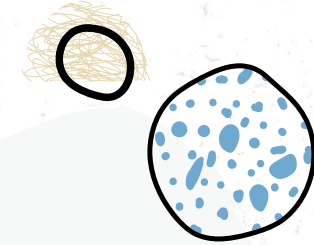
Projection came out very clear, crisp, and visually appealing



Challenges

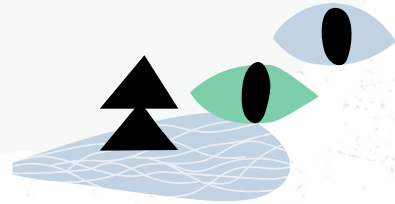
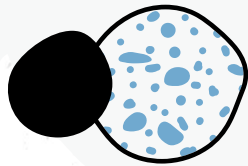


- We need more distance between the flashlight and text to create a clear projection and display a larger text/image
- Compact size suitable for the flashlight



03

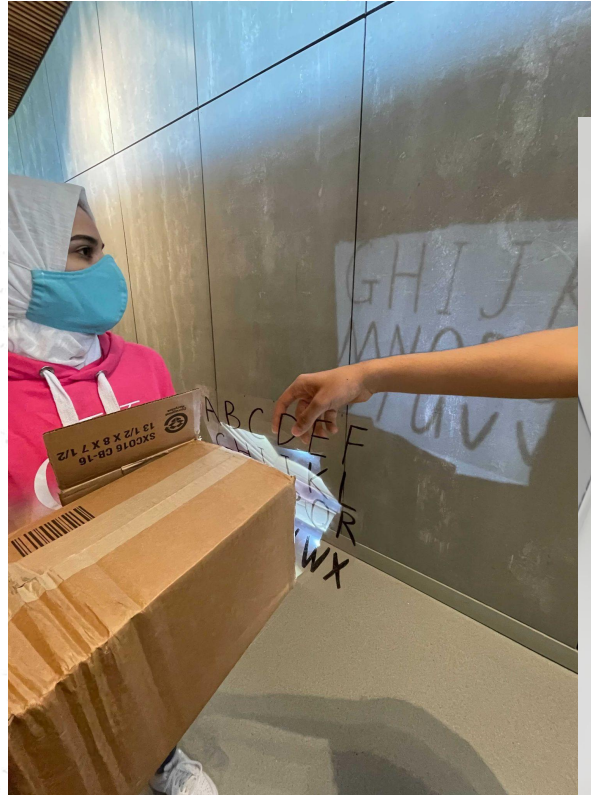
Product Models





Box Model

Wooo! It helped us figure out the distance between light source and design.

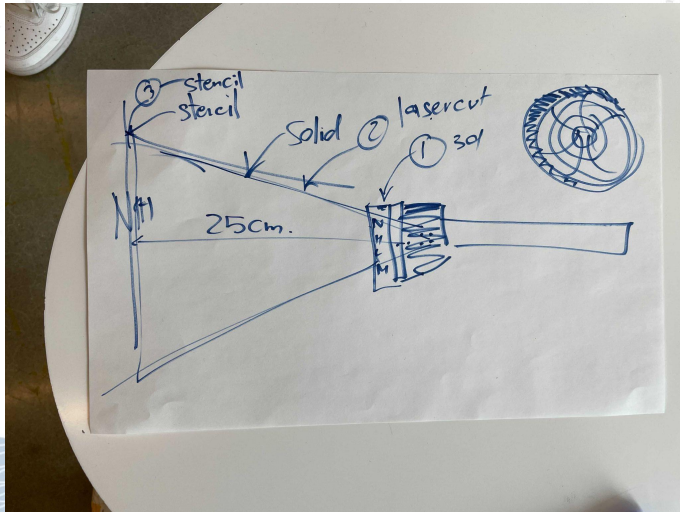


Reimagined the box model



Compact model

Reduced the box model into smaller individual parts.



Flashlight attachment

Attaches to flashlight head allowing for different flashlight sizes



Cone



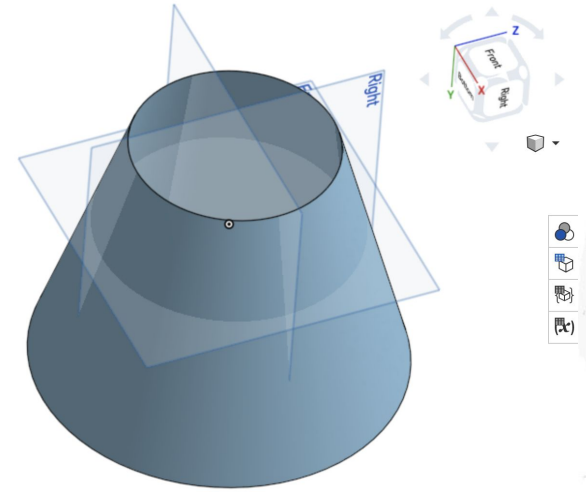
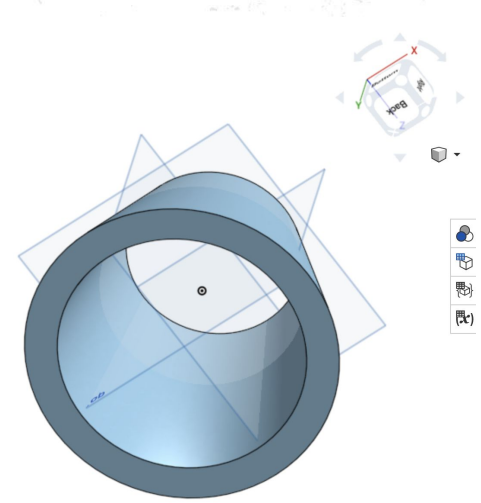
Provides distance between light source and stencil

Nearly opaque PLA material

Thin and Light

Attachments on both ends

Weather proof



Stencil slot design

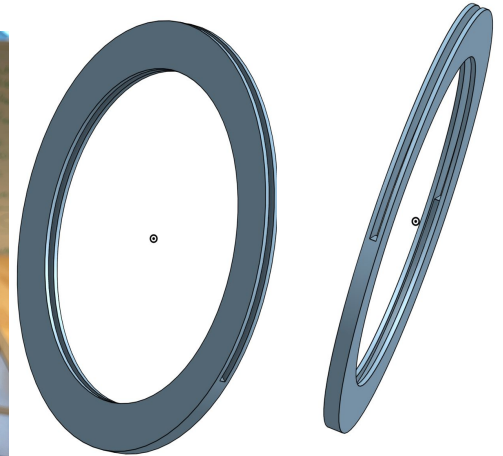
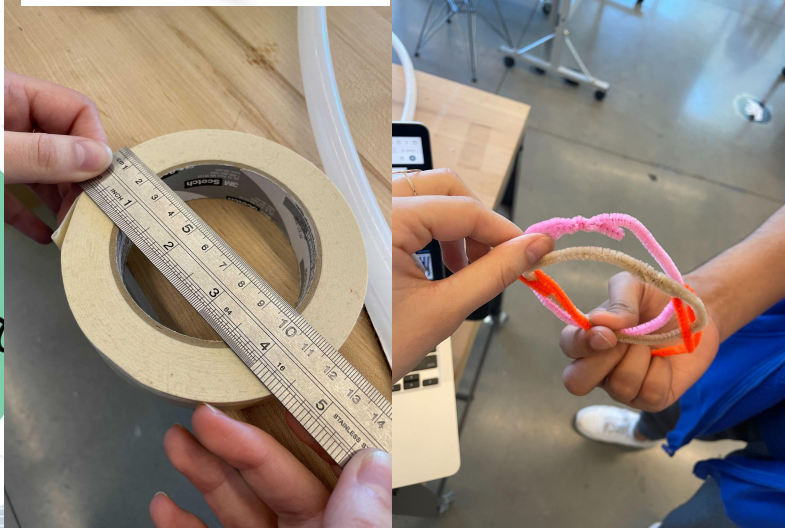
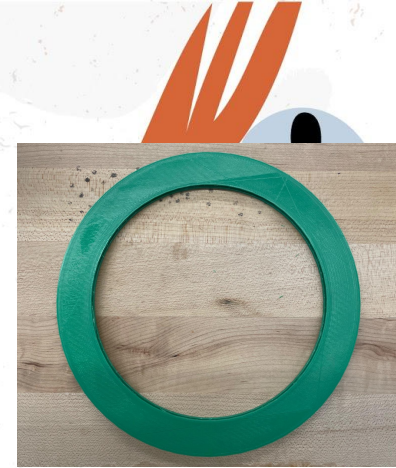
Ideation

Visualising the slot with different objects in the maker lab and online



Final design

Ring based

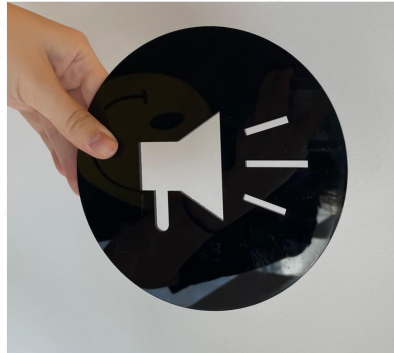


Final Stencils



Pre-cut stencils

Stencils that connect with NHLM.
Easily create more by editing digital
assets at the maker lab



Transparent ones

User can create their own reusable
stencils with a marker to project
text/art

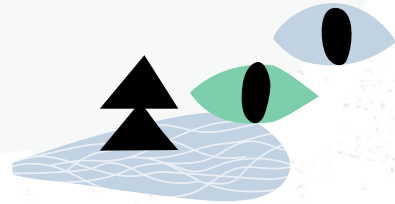
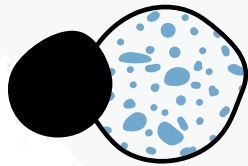


Prototypes Comparison

	Stand-alone Flashlight	Trapezoid	Box	Shutter Slot & Cone
Easy to use and carry around	✗	✓	✓	✓
Easy to assemble	✗	✗	✓	✓
Adjustable to different sources of light	✓	✗	✗	✓
Creates distance for projection	✓	✗	✓	✓

04

Instructions & Demo



Product Kit



Each resident at Coler would get the following projector Kit:

- 2 pre-cut stencils
- 2 transparent acrylics
- Colored dry erase markers
- Flashlight
- Handheld projector
- Visual instructions manual in 3 different languages

Printed Instructions Manual

Instructions Manual



Step 1: Decide if you want to use a pre-cut stencil or create your own design.



Step 2: If creating your own, use the transparent round material and colored dry erase markers.



Step 3: Place the design in the slot holder.



Step 4: Insert your flashlight into the adjustable shutter attachment.



Step 5: Adjust the shutter to the size of the flashlight and lock it.



Step 6: Turn on the flashlight to the highest brightness and point the stencil to a wall

دليل التعليمات

الخطوة ١: قرر ما إذا كنت تريد استخدام استنسل مقطوع مسبقاً أو إنشاء التصميم الخاص بك.

الخطوة ٢: إذا كنت تقوم بتصميم خاصتك، فاستخدم المادة المستديرة الشفافة وأقلام السبورة الملونة.

الخطوة ٣: ضع التصميم في حامل الفتحة الدوارة.

الخطوة ٤: أدخل المصباح في مرفق الغالق القابل للضغط.

الخطوة ٥: اضبط المصراع على حجم المصباح وقلعه.

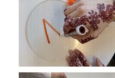
الخطوة ٦: قم بتشغيل المصباح لأعلى درجة سطوع ووجه الاستنسل إلى الحائط.



Manual de Instrucciones



Step 1: Decide si quieres usar una plantilla precortada o crear tu propio diseño.



Step 2: Si está creando el suyo, utilice el material redondo transparente y los rotuladores de borrado en seco de colores.



Step 3: Coloque el diseño en el soporte de la ranura.



Step 4: Inserte su linterna en el accesorio del obturador ajustable.



Step 5: Ajuste el obturador al tamaño de la linterna y bloquéelo.



Step 6: Encienda la linterna al máximo brillo y apunte la plantilla a una pared.

English

Arabic

Spanish



Digital Instructions Manual - Part 1



Step 1

Decide if you want to use a pre-cut stencil or create your own design.



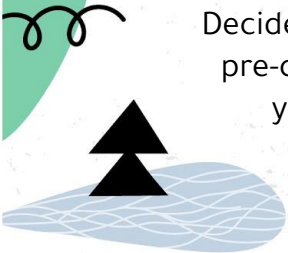
Step 2

If creating your own, use the transparent round material and colored dry erase markers.



Step 3

Place the design in the slot holder



Digital Instructions Manual - Part 2



Step 4

Insert your flashlight into the adjustable shutter attachment



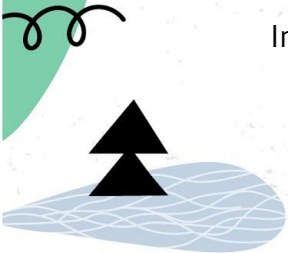
Step 5

Adjust the shutter to the size of the flashlight and lock it



Step 6

Turn on the flashlight to the highest brightness and point the stencil to a wall



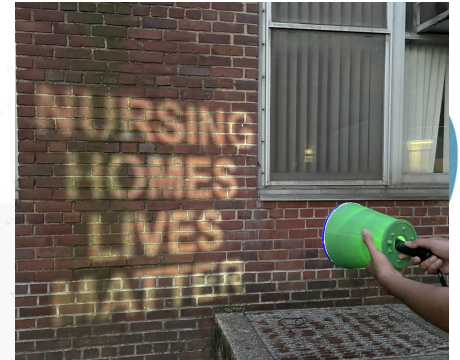
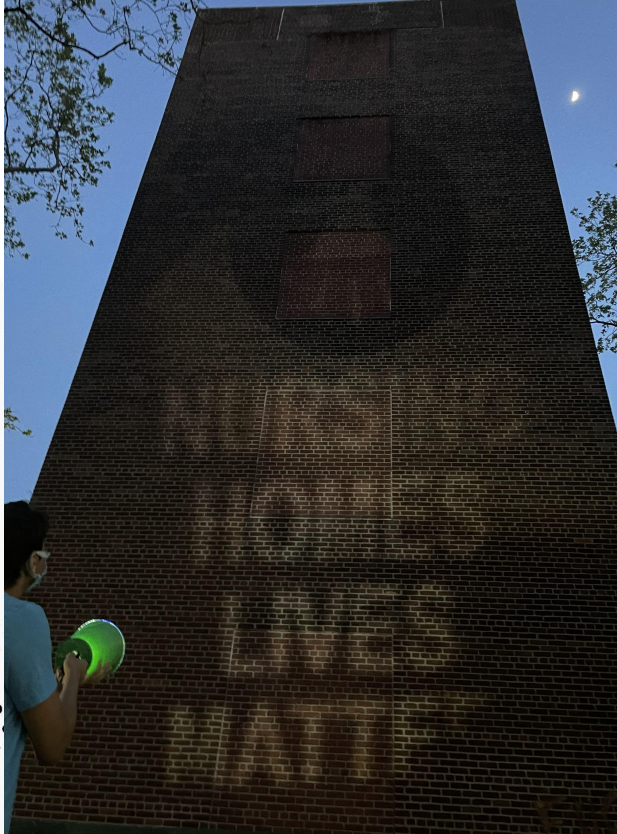
DEMO





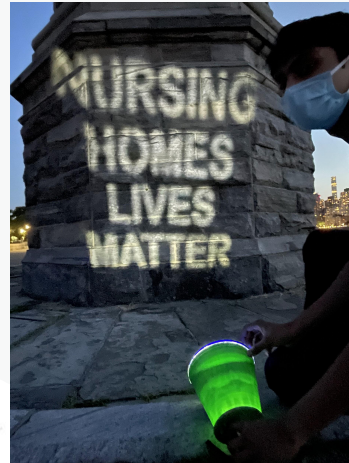
Testing the Product

Coler Nursing Home



Testing the Product

Roosevelt Island



Thank You!

Niti

Dexter

EL

Open Doors Team

Roosevelt Island
Community

This design project will empower Coler residents and shed light to their voices.

